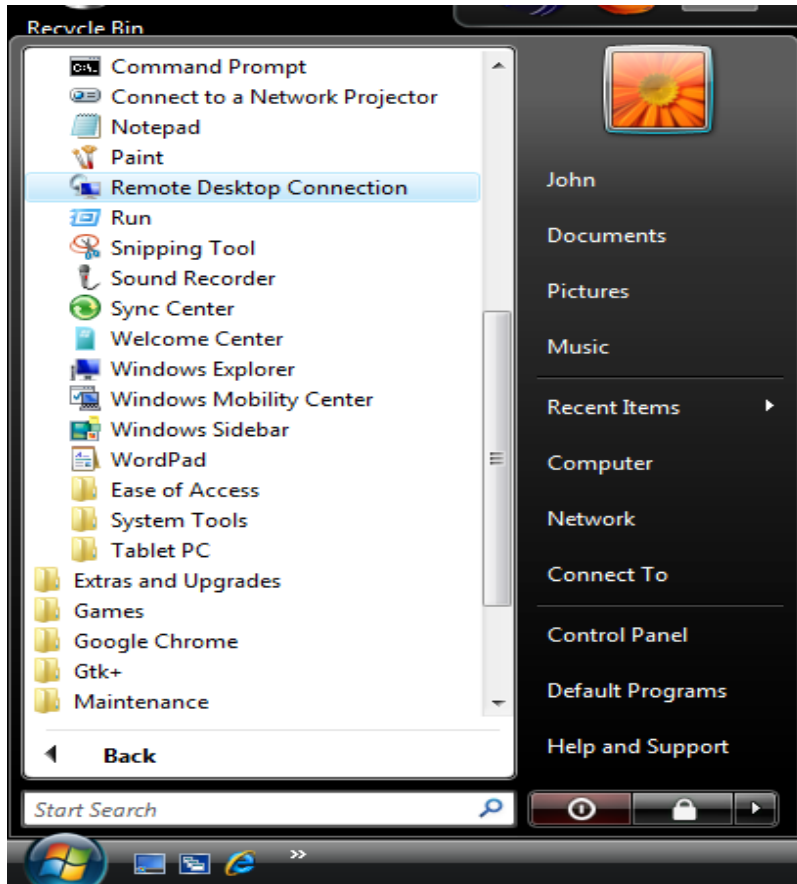


Accessing Maple 13 in Windows

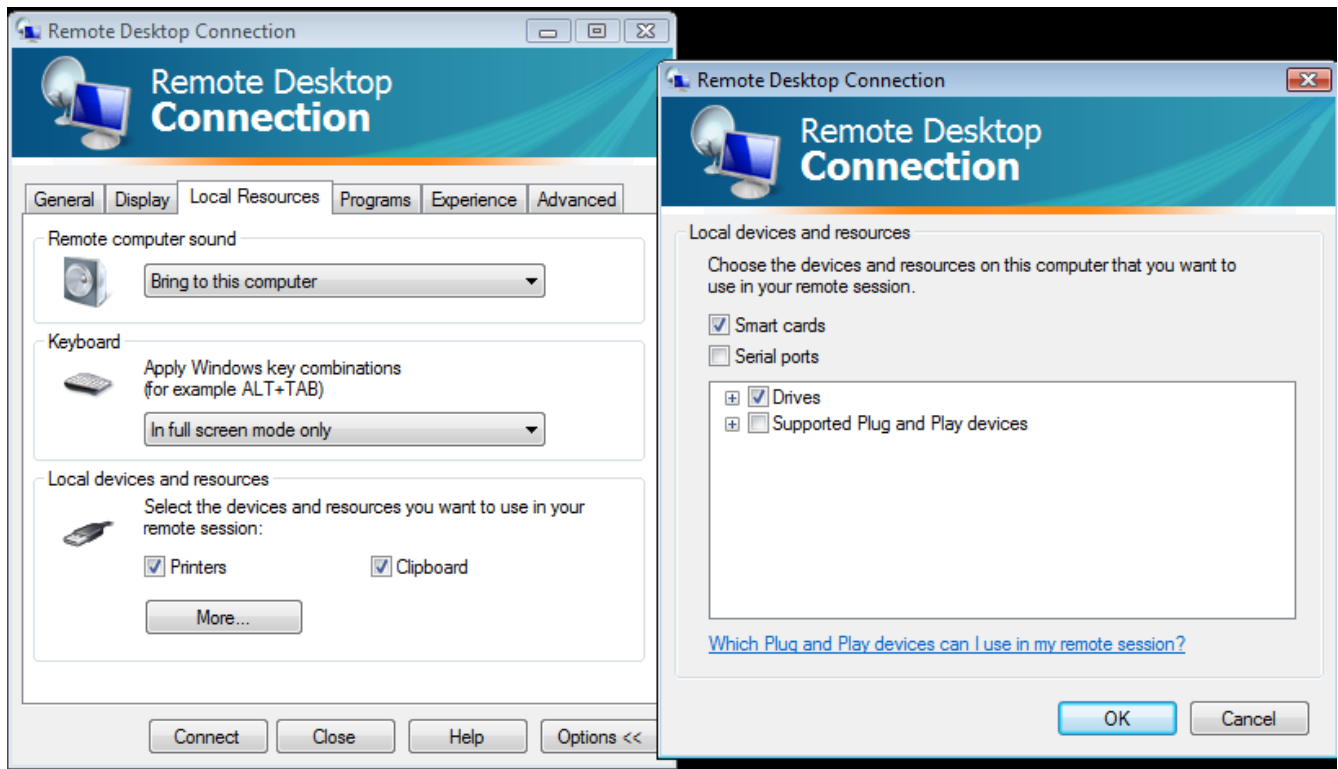
You should already have installed a program called **Remote Desktop Connection**: Here is where it is in Vista:



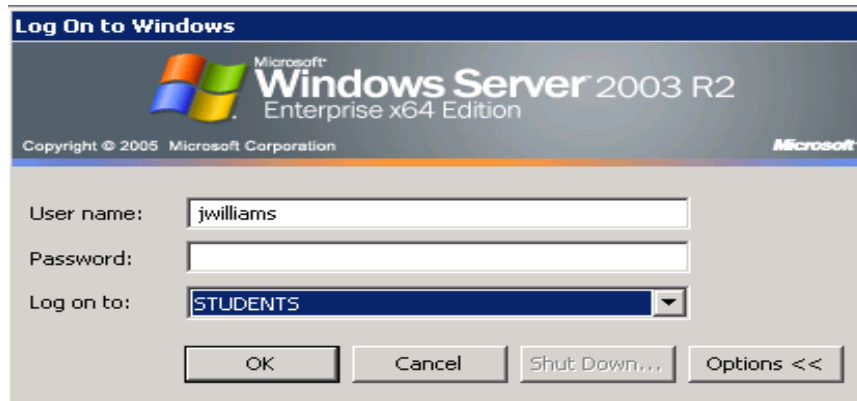
Run the program and use `maple.hartford.edu` for the Computer



Click Options>> to get to this screen



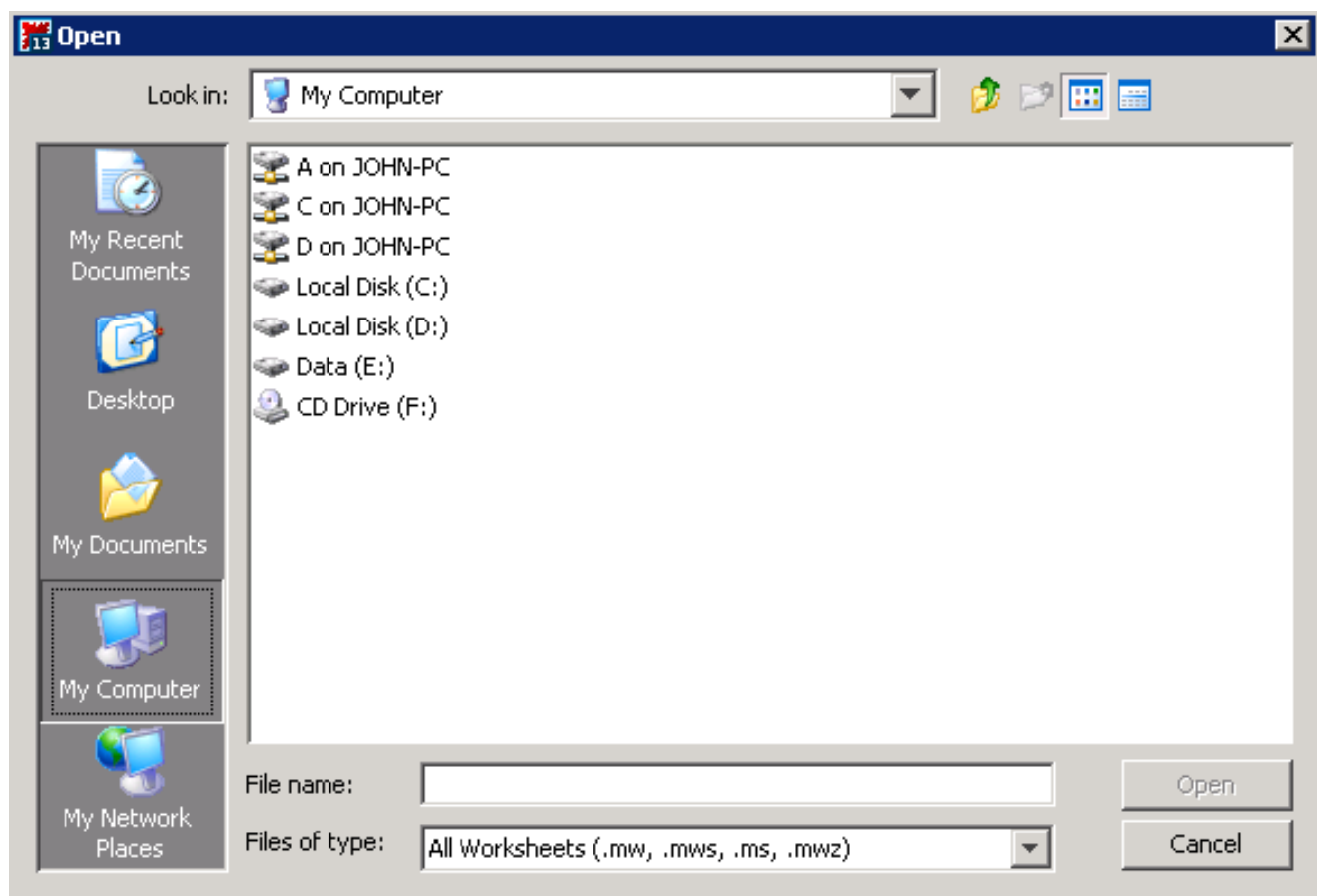
Click on Local Resources, then More and on the new screen check Drives. Click OK and Connect to bring you to this screen.



User name is your email name and email password. You should log on to STUDENTS.

Again click through the warnings until you reach start. You should start right in Maple 13.

If you have set up your session to use the drives on your machine, clicking on file/open should bring you to a screen that looks like this:



The files on your machine are labelled A on MyMachine – PC where MyMachine is the name of your machine. One caveat: maneuvering through your directories can be slow depending on the size of each directory. But once you get to directory, Maple will use that directory to start.