

Mouvements Perpétuels

Transcribed for Trumpet and Piano

Francis Poulenc

(1899 - 1963)

Edited by Jay Lichtmann

I.

Assez modéré $\text{♩} = 144$

Trumpet

mp En général, sans nuances

Piano

mp

En général, sans nuances

5

mf en dehors

mp

mf

mp

9

f

f

pp doucement timbré

13

f *p*

17

mp *pp* *mp*

21

rall. *Très lent*

ralentir en pesant sur la main droite *Très lent*

pp

*Red. - - - - **

II.

Très modéré ♩ = 92

Musical score for the first system, measures 1-3. The piece is in 4/4 time and begins with a tempo marking of "Très modéré" and a metronome marking of ♩ = 92. The first staff (treble clef) contains the melody, starting with a mezzo-piano (*mp*) dynamic and an "indifférent" (indifferent) expression. The dynamic shifts to mezzo-forte (*mf*) in the third measure. The piano accompaniment (grand staff) features a steady eighth-note bass line in the left hand and chords in the right hand, with dynamics of *mp* and *mf*.

Musical score for the second system, measures 4-6. The melody in the first staff continues with a piano (*p*) dynamic. The piano accompaniment in the grand staff maintains its rhythmic pattern, with dynamics of *p* and *mf*.

Musical score for the third system, measures 7-9. The melody in the first staff begins with a forte (*f*) dynamic. The piano accompaniment in the grand staff also features a forte (*f*) dynamic, which then softens to pianissimo (*pp*) in the final measure.

10

mp légèrement timbré *p*

mp légèrement timbré *p*

2 Pédales

13

mp dim. cedéz *ppp* sec

mp dim. cedéz *pp* *ppp*

III.

Alerte ♩ = 138

f

f

3

f

6

en s'apaisant un peu (poco rall.)

mf

p

mf

mf

10

mf

18

mp

mp

24

mf

mf

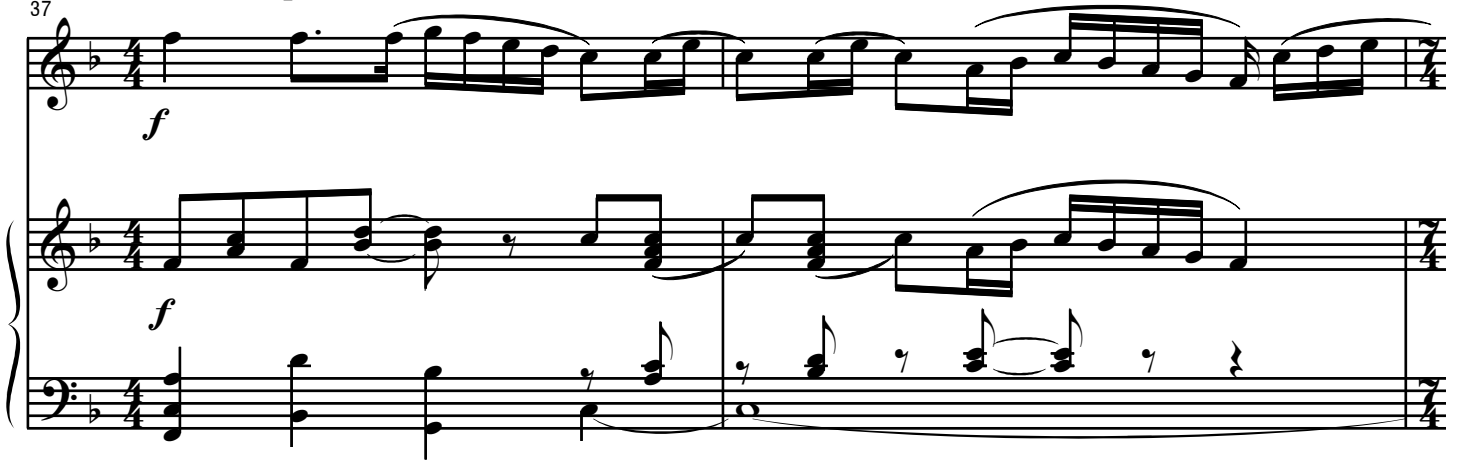
31

cedéz

cedéz

 a Tempo

37



Un peu moins vite  = 108

39



les deux pédales

42



46

ff

tr

ff

50

mp

mp

tr

les deux pédales

54

p

pp

ppp

ralentir en s'effacant

tr

p

pp

ppp

Mouvements Perpétuels

Transcribed for Trumpet and Piano

Trumpet in C

Francis Poulenc

(1899 - 1963)

Edited by Jay Lichtmann

I.

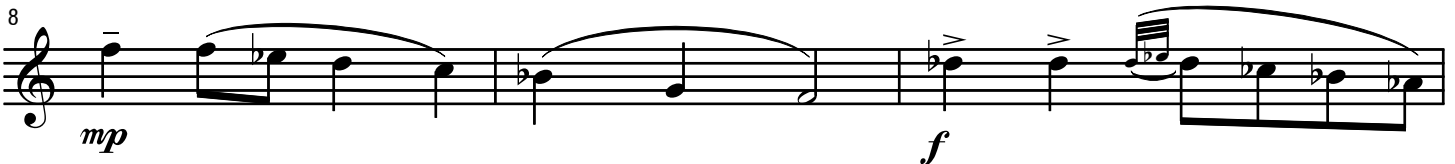
Assez modéré $\text{♩} = 144$



mp En général, sans nuances



mf en dehors



mp

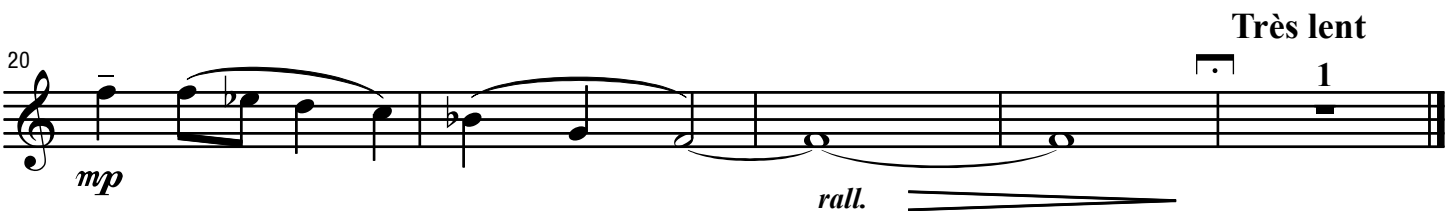
f



f



p



mp

rall.

Très lent

1

II.

Très modéré ♩ = 92

Musical score for section II, measures 1-12. The piece is in 4/4 time with a tempo of 92 beats per minute. The key signature has one flat (B-flat). The score consists of four staves of music. The first staff (measures 1-4) starts with a mezzo-piano (*mp*) dynamic and the instruction "indifférent". The second staff (measures 5-6) begins with a piano (*p*) dynamic. The third staff (measures 7-11) starts with a forte (*f*) dynamic and includes a second ending marked with a "2" and a repeat sign. The fourth staff (measures 12) begins with a piano (*p*) dynamic, followed by a mezzo-piano (*mp*) dynamic with a "dim." (diminuendo) hairpin and the instruction "cedez", leading to a pianissimo (*ppp*) dynamic.

mp indifférent *mf*

4 *p*

7 *f* *mp* légèrement timbré

12 *p* *mp* dim. cedez *ppp*

III.

Alerte ♩ = 138

Musical score for section III, measures 1-13. The piece is in 4/4 time with a tempo of 138 beats per minute. The key signature has one flat (B-flat). The score consists of three staves of music. The first staff (measures 1-4) starts with a forte (*f*) dynamic. The second staff (measures 5-12) begins with a mezzo-forte (*mf*) dynamic and includes a second ending marked with a "2" and a repeat sign. The third staff (measures 13) continues the melody. The score features various rhythmic patterns, including eighth and sixteenth notes, and rests.

f

3

5 *mf*

13

20 *mp* *mf*

25

32 *celéz*

37 *f* *a Tempo*

39 *Un peu moins vite* ♩ = 108 *p*

42 2

47 *ff*

50 *mp* 2

55 1 2 *p* *pp* *ralentir en s'effacant*